

# WILDERNESS HILLS



## Wilderness Hills 1st Addition

South 27th St. and Whispering Wind Blvd.  
(1/2 mile south of Yankee Hill Rd. on South 27th St.)

### Covenant Requirements

#### Setbacks:

25 ft. front (20 ft. cul-de-sac)  
7.5 ft. side yard (5 ft. cul-de-sac)  
20 - 25 ft. side street on corner lots  
Rear yard - adhere to abutting street

#### Minimum Finished Floor Area:

Ranch	1,650 S.F.
1 1/2 Story	1,850 S.F.
2 Story	2,150 S.F.

Plan, elevation, and site approval required. See restrictive covenants specific to this addition for other restrictions as well as exterior finish and roofing requirements.

Association Dues: \$100 per year

Developed by:



## Lincoln Federal

BANCORP, INC.

### Contact Information

Rich Bredenkamp  
1101 "N" St.  
Lincoln, NE 68508  
www.lincolnfed.com  
(402) 474-1400

### LEGEND

**S** - Sold

**P** - Contract Pending

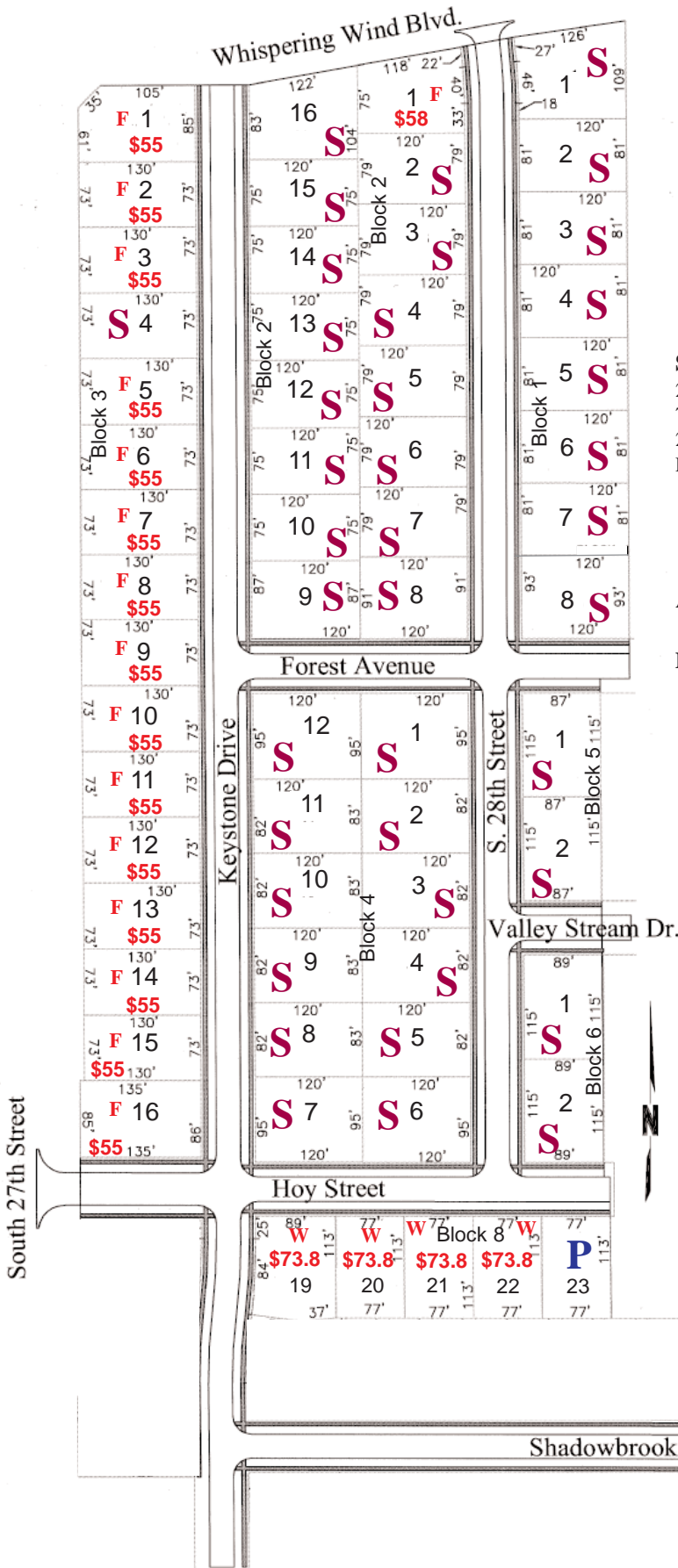
**W** - Walkout

**D** - Daylight

**F** - Flat

Current as of 9/1/10

Prices shown per thousand & subject to change without notice.



**HOMEOWNERS: Lots available for direct purchase!**